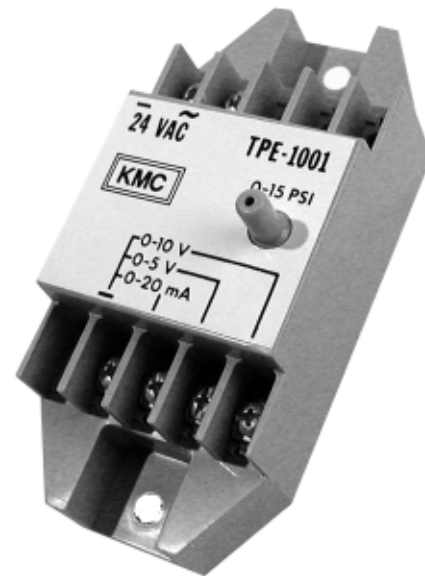


### Description

The TPE-1001 is designed as an interface device between pneumatic control components and building automation systems.

Pneumatic devices such as thermostats, transmitters and receiver-controllers can supply the 0 to 15 psi input signal to the TPE-1001. Any one of the three different outputs may be used to satisfy system requirements. Available outputs are 0 to 5 VDC, 0 to 10 VDC, or 0 to 20 mA. Only one output may be used per application.

The TPE-1001 may be mounted in either a *deep* 2" x 4" handy box or on a surface such as a panel backplate. A deep box is required to accommodate the 3/16" (5 mm) diameter tubing connection.



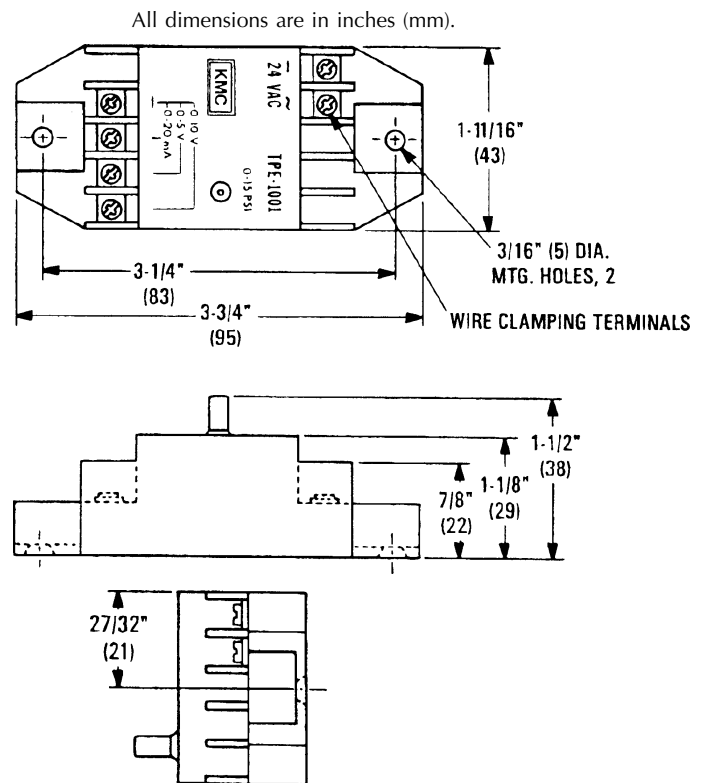
### Features

- ◆ Works with any 0 to 15 psi pneumatic device
- ◆ Easily mounted using a handy box or flat surface mounting.
- ◆ Three available outputs 0 to 5 VDC, 0 to 10 VDC or 0 to 20 mA.

### Specifications

<b>Supply Voltage</b>	24 VAC, +20%, -15%
<b>Supply Power</b>	0.5 VA
<b>Input Signal</b>	0 to 15 psi (103 kPa), 30 psi max. (207 kPa) using 1/4" O.D. (6 mm) polyethylene tubing
<b>Output Signal</b>	0-5 VDC, 0-10 VDC, 0-20 mA
<b>Output Accuracy</b>	+/- 3%
<b>Material</b>	Beige ABS, UL Flame Class 94HB
<b>Wire Size</b>	14 to 22 AWG recommended
<b>Receiver Load</b>	500 ohms max, 0 to 20 mA 1000 ohms min., 0-5/0-10 VDC
<b>Weight</b>	2 oz. (57 grams)
<b>Temperature Limits</b>	
Operating	40° to 120° F (4° to 49° C)
Shipping	-40° to 140° F (-40° to 60° C)

### Details



**KMC Controls, Inc.**  
 19476 Industrial Drive  
 New Paris, IN 46553  
 574.831.5250  
[www.kmcccontrols.com](http://www.kmcccontrols.com)