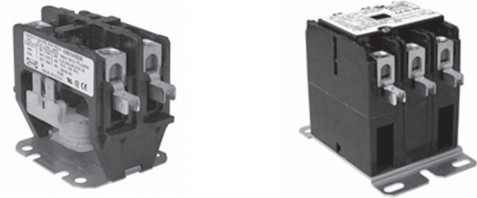


Provide switching of electrical loads such as air conditioning, refrigeration, compressors, motors and resistive heaters in HVAC and temperature control systems.

- 2 and 3 pole models available for switching 30 to 60 FLA.
- Box lugs and dual quick connects on line and load terminals.
- Reduced power consumption coils generate less heat.
- Optional auxiliary contacts available for 3-pole models.
- Industry standard mounting plate for ease in installation.



**APPROVALS:** UL component recognized, U.S. and Canada.  
**LINE/LOAD TERMINALS:** Box lug & dual .250 quick connects.  
**COIL TERMINALS:** Dual .250 quick connects.  
**WIRE SIZE:** 4-14 AWG, copper or aluminum.  
**OPERATING AMBIENT:** -40° to 149°F (-40° to 65°C).

**MOUNTING:** Supplied with industry standard mounting plate.  
**DIMENSIONS (Nominal):**

2-Pole, 30/40A: 2.6”H x 2.1”W x 2.3”L (6.6x5.34x5.84cm).  
 3-Pole, 30/40A: 3”H x 2.4”W x 3.75”L (7.6x6.1x9.53cm).  
 3-Pole, 50/60A: 3.6”H x 2.75”W x 3.75”L (9.2x7x9.53cm).

#### COIL RATINGS

MODEL	TYPE	INRUSH (max)	SEALED (max)
CN24A2D30, D40 CN01A2D30, D40 CN02A2D30	2P/30A, 2P/40A	37 VA	8 VA
CN24A3C30, C40 CN01A3C30, C40 CN02A3C40	3P/30A, 3P/40A	60 VA	6 VA
CN24A3B50, B60 CN01A3B50, B60 CN02A3B50, B60	3P/50A, 3P/60A	140 VA	20 VA

#### OPTIONAL AUXILIARY SWITCHES

(Contacts, Rated at 10A, 1/3 HP @ 125/250 vac)

CONTACTOR MODEL NO.	TYPE	AUXILIARY SWITCHES	
		Part No.	Description
CN24A2D30, D40 CN01A2D30, D40 CN02A2D30	2P/30A, 2P/40A	None Available	
CN24A3C30, C40 CN01A3C30, C40 CN02A3C40	3P/30A, 3P/40A	CN1C	(1) SPDT
		CN2C	(2) SPDT
CN24A3B50, B60 CN01A3B50, B60 CN02A3B50, B60	3P/50A, 3P/60A	CN1B	(1) SPDT

Model	Coil Voltage	Poles	Full Load Amps <sup>1</sup>	Locked Rotor Amps	Resistive <sup>2</sup>	Horsepower Rating	
						1-Phase	3-Phase
CN24A2D30	24V	2	30A	150A @ 240/277V 125A @ 480V 100A @ 600V	40A	2 HP @ 120V 3 HP @ 240V	----- -----
CN01A2D30	120V						
CN02A2D30	208/240V						
CN24A2D40	24V	2	40A	240A @ 240/277V 200A @ 480V 160A @ 600V	50A	2 HP @ 120V 3 HP @ 240V	----- -----
CN01A2D40	120V						
CN24A3C30	24V	3	30A	180A @ 240/277V 150A @ 480V 120A @ 600V	40A	2 HP @ 110/120V 5 HP @ 240/277V	10 HP @ 200-277V 15 HP @ 280V 20 HP @ 600V
CN01A3C30	120V						
CN24A3C40	24V						
CN01A3C40	120V	3	40A	240A @ 240/277V 200A @ 480V 160A @ 600V	50A	2 HP @ 110/120V 7.5HP @ 240/277V	10 HP @ 200-277V 20 HP @ 480V 25 HP @ 600V
CN02A3C40	208/240V						
CN24A3B50	24V	3	50A	300A @ 240V 250A @ 480V 200A @ 600V	65A	3 HP @ 110/120V 7.5HP @ 200/208V 10 HP @ 220-240V	15 HP @ 200/208V 15 HP @ 220-240V 25 HP @ 480/600V
CN01A3B50	120V						
CN02A3B50	208/240V						
CN24A3B60	24V	3	60A	360A @ 240V 300A @ 480V 240A @ 600V	75A	5 HP @ 110/120V 7.5HP @ 200/208V 10 HP @ 220-240V	25 HP @ 200/208V 25 HP @ 220-240V 30 HP @ 480/600V
CN01A3B60	120V						
CN02A3B60	208/240V						

<sup>1,2</sup> Rating @ 240-600 vac.