

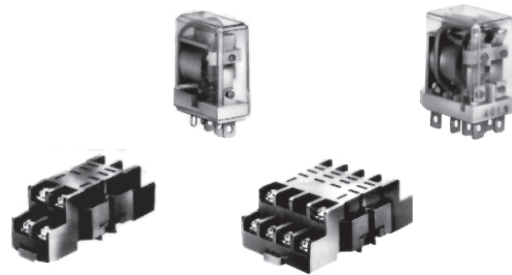
RH Series

MIDGET GENERAL PURPOSE RELAYS

For Use with SH Series Plug-in Sockets

Provide general purpose or power switching in electrical circuits where a compact relay is required to meet minimal space requirements in panels or other enclosures.

- Miniature size for compact system design.
- Heavy duty contact rating.
- Available in SPDT, DPDT, 3PDT or 4PDT.
- Indicator light available on DPDT, 3PDT, 4PDT.
- Relay blade terminals snap-mount into SH series sockets.
- Relays with sockets may be surface or rail mounted.



APPROVALS: U.L. recognized; CSA certified.
CONTACT MATERIAL: Silver cadmium oxide.
CONTACT RESISTANCE: 50 milli-ohms maximum.
COIL RATINGS:

Rated Voltage: 24 vac; 120 vac; 6 vdc; 24 vdc.
Continuous Maximum: 110% of rated voltage.
Pick-up Voltage: 80% of rated voltage.

POWER CONSUMPTION:

SPDT (RH1B): 1 va for vac/60Hz; 0.8 watts for vdc.
DPDT (RH2B): 1.2 va for vac/60 Hz; 0.9 watts for vdc.
3PDT (RH3B): 1.7 va for vac/60Hz; 1.5 watts for vdc.
4PDT (RH4B): 2 va for vac/60Hz; 1.5 watts for vdc.

OPERATE TIME: 25 milliseconds, maximum.

RELEASE TIME: 25 milliseconds, maximum.

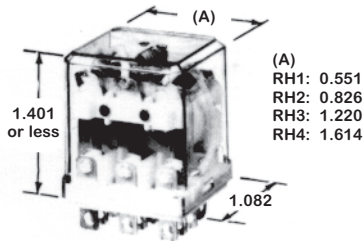
WIRING TERMINALS (SH Series Sockets): Screw with captive wire clamp for #2 to #12 awg.

OPERATING AMBIENT: -22°F to 158°F (-30°C to 70°C).

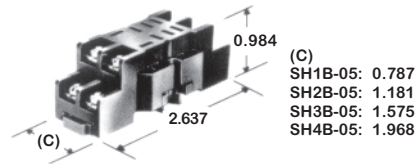
ACCESSORIES: SH1B-05 socket for RH1B (SPDT);
SH2B-05 socket for RH2B (DPDT);
SH3B-05 socket for RH3B (3PDT);
SH4B-05 socket for RH4B (4PDT).

BAM-1000 DIN mounting rail.

SCUSL screwless DIN rail end stop.

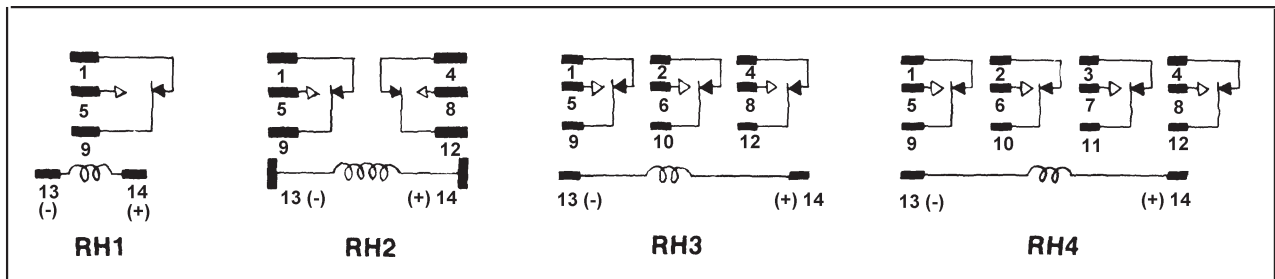


RELAY DIMENSIONS (Inches)



SOCKET DIMENSIONS (Inches)

CIRCUIT DIAGRAMS



CONTACT RATINGS (U.L. Files E67770, E59804, E64245)

Model	Relay Type	Resistive (amps)			Inductive (amps)			Horsepower (HP)	
		120 vac	240 vac	30 vdc	120 vac	240 vac	30 vdc	120 vac	240 vac
RH1B	SPDT	-----	10	10	7	7	7	1/6	1/3
RH2B	DPDT	-----	10	10	7	7	7	1/6	1/3
RH3B	3PDT	10	-----	10	-----	6.5	-----	1/6	1/3
RH4B	4PDT	10	7.5	-----	7.5	5	-----	-----	-----