

ARF Series

FILTER-REGULATORS

Combine functions of a pre-filter and a pressure regulator into a single unit for use on compressed air service in pneumatic control systems.

- 5 micron filter element removes most solid and liquid particles.
- Automatic drain models operate unattended.
- Push-to-lock adjustment knob maintains regulator setpoint.
- Standard series units have metal bowl & liquid level indicator.

REGULATOR TYPE: Relieving diaphragm.

FILTER ELEMENT:

Miniature: 5 micron, polypropylene.

Standard: 5 micron, sintered plastic.

FLUID: Compressed air only.

MAXIMUM PRESSURE: 150 psig (1034 kPa) for miniature series; 250 psig (1724 kPa) for standard series.

OPERATING AMBIENT: 0°F to 125°F (-20°C to 52°C) for miniature series; 0°F to 175°F (-20°C to 80°C) for standard series. With air sufficiently dry to avoid ice formation below 35°F (2°C).

MOUNTING: Vertically (drain at bottom) in-line or in panel. Wall mounting brackets available.

DRAIN CONNECTION (Automatic Drain Models): 1/8" MPT.



MATERIALS:

Miniature: Zinc body; acetal bonnet; polycarbonate bowl; brass valve; nitrile elastomers.

Standard: Aluminum body, bonnet & bowl; brass valve; nitrile/neoprene elastomers.

ACCESSORIES:

Miniature: AX-01 plastic panel mounting nut.

AX-03 wall mounting bracket with nut.

GP series pressure gauges (1/8" MPT).

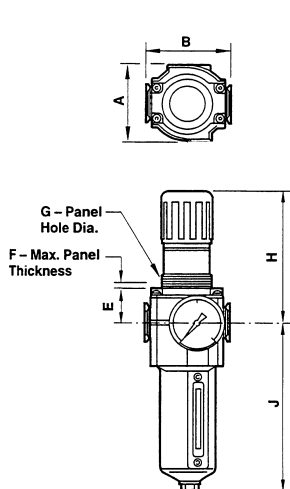
AZ-1 replacement 5 micron filter element.

Standard: AX-02 plastic panel mounting nut.

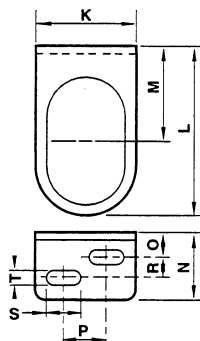
AX-05 wall mounting bracket with nut.

GP series pressure gauges (1/4" MPT).

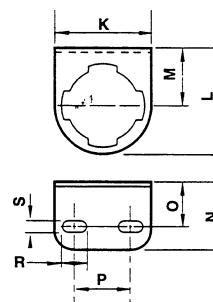
AZ-5 replacement 5 micron filter element.



ARF-10, 20; ARF-210, 310
FILTER-REGULATORS



AX-03 WALL BRACKET
FOR ARF-10, 20 FILTER-REGULATORS
(Supplied with Nut for Mounting
Regulator to Bracket)



AX-05 WALL BRACKET
FOR ARF-210, 310 FILTER-REGULATORS
(Supplied with Nut for Mounting
Regulator to Bracket)

Dimensions in Inches (mm)

Filter-Regulator Model	A Max. Dia.	B	E	F	G	H	J		Wall Mounting Bracket	K	L	M	N	O	P	R	S	T
							Auto. Drain	Man. Drain										
ARF-10, 20	1.50 (38)	1.63 (41)	1.12 (28)	0.25 (6)	1.19 (30)	2.67 (68)	---	3.77 (96)	AX-03	1.50 (38)	2.47 (63)	1.41 (36)	1.00 (25)	0.38 (10)	0.69 (18)	0.31 (8)	0.51 (13)	0.22 (6)
ARF-210, 310	2.45 (62)	2.68 (68)	1.22 (31)	0.25 (6)	1.89 (48)	3.80 (96)	5.80 (147)	6.15 (156)	AX-05	2.50 (64)	2.75 (70)	1.50 (38)	1.50 (38)	1.00 (25)	1.50 (38)	0.66 (17)	0.28 (7)	---

Model	Type	Main Port Connections	Drain Operation	Outlet Pressure Setpoint Range ^a	Rated Flow ^b	Gauge Ports
ARF-10M	miniature series	1/8" FPT	manual	5 to 100 psig (34 to 689 kPa)	11 scfm (312 l/s) 16 scfm (453 l/s)	1/8" FPT (two)
ARF-20M		1/4" FPT				
ARF-210A	standard series	1/4" FPT	automatic	5 to 150 psig (34 to 1034 kPa)	70 scfm (1981 l/s)	1/4" FPT (two)
ARF-210M			manual			
ARF-310A		3/8" FPT	automatic			
ARF-310M			manual			

^a Outlet pressure can be adjusted to 0 psig; however, regulator should not be used to control outlet pressures which are less than the minimum setpoint shown.

^b Approximate flow at 100 psig (689 kPa) inlet pressure and 25 psig (172 kPa) outlet pressure with 3 psig (21 kPa) pressure drop.