

### **Description**

The KMC REE-5002 relay module is designed primarily for use with VAV fan powered induction boxes. When used in conjunction with a direct acting CTE-5100 series room thermostat, the unit mounted fan and two stages of reheat can be controlled.

Each output circuit is capable of handling contactors of up to 10 VA @ 24 VAC. The "FAN" output circuit may be adjusted to start the unit fan at an air flow setting of 0 to 3,000 FPM. The two reheat circuits are factory set to sequentially actuate after the fan starts if the room temperature continues to fall.

Using the REE-5002 allows full adjustment of the unit fan starting point so that optimum use can be made of the warm air in the return air plenum before actuating reheat coils

### **Features**

- ◆ Controls unit fan and two stages of reheat (when used with CTE-5100 series thermostats)
- ◆ Each output capable of handling contactors of up to 10 VA @ 24 VAC
- ◆ "FAN" output adjustable to start the unit fan at an air flow setting of 0-3,000 FPM.
- ◆ Each reheat stage set to sequentially actuate after the fan starts
- ◆ Simple installation



### **Application**

The KMC REE-5002 Relay Module is intended for use with the following:

**Associated Controllers/Actuators:**

CSP-5001

**Associated Thermostats:**

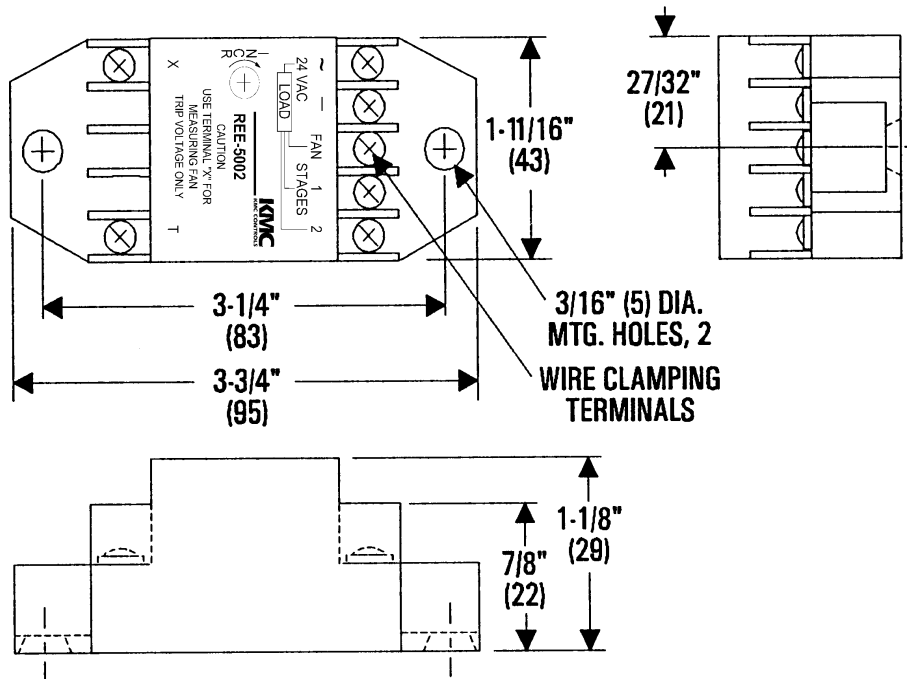
CTE-5101

CTE-5103

CTE-5105

## Details

All dimensions are in inches (mm)



## Specifications

<b>Supply Voltage</b>	24 VAC, +20%/-15% @ 1 VA plus output loads
<b>Input Signal</b>	0 to 10 VDC
<b>Output Capacity</b>	10 VA per stage @ 24 VAC
<b>Fan Setpoint</b>	4.0 VDC, adjustable 3-8 VDC
<b>Connections</b>	Plated screw terminals
<b>Wire Size</b>	14-22 AWG, stranded
<b>Material</b>	Beige ABS, UL Flame Class 94 HB
<b>Weight</b>	2 oz. (57 grams)
<b>Temperature Limits</b>	
Operating	40° to 120°F (4° to 49°C)
Shipping	-40° to 140°F (-40° to 60°C)

**KMC Controls, Inc.**  
19476 Industrial Drive  
New Paris, IN 46553  
574.831.5250  
[www.kmccontrols.com](http://www.kmccontrols.com)