

### Description

KMC REE-5001 relay modules are designed primarily for use with VAV terminal units in HVAC systems. When used in conjunction with CTE-5100 series room thermostats, up to three stages of reheat may be controlled.

Each output circuit is capable of handling contactors of up to 10 VA @ 24 VAC. The three circuits are calibrated to actuate at equally spaced intervals across the thermostat's proportional band.

By using the REE-5001, the heating requirements of a particular VAV terminal may be actuated in three separate steps affording more precise temperature control.

### Features

- ◆ Controls up to three stages of reheat when used with CTE-5100 series thermostats)
- ◆ Each output capable of handling contactors of up to 10 VA @ 24 VAC
- ◆ Each stage calibrated to actuate at equally spaced intervals across the thermostat's proportional band
- ◆ Simple installation

### Application

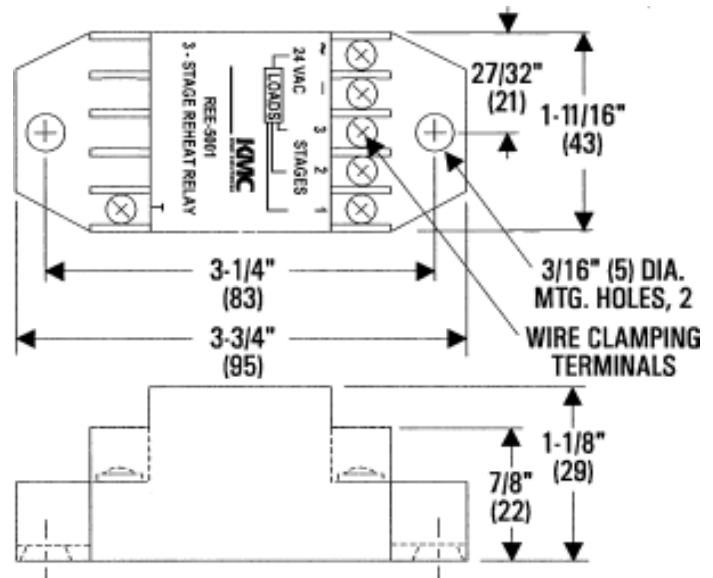
The KMC REE-5001 Relay Module is intended for use with CTE-5104 thermostats.

### Specifications

|                           |  |
|---------------------------|--|
| <b>Supply Voltage</b>     | 24 VAC, +20%/-15% @ 1 VA plus output loads |
| <b>Input Signal</b>       | 0 to 10 VDC                                |
| <b>Output Capacity</b>    | 10 VA per stage @ 24 VAC                   |
| <b>Connections</b>        | Plated screw terminals                     |
| <b>Wire Size</b>          | 14 -22 AWG, stranded                       |
| <b>Material</b>           | Beige ABS, UL Flame Class 94 HB            |
| <b>Weight</b>             | 2 oz. (57 grams)                           |
| <b>Temperature Limits</b> |  |
| Operating                 | 40° to 120° F (4° to 49° C)                |
| Shipping                  | -40° to 140° F (-40° to 60° C)             |



All dimensions are in inches (mm)



**KMC Controls, Inc.**  
 19476 Industrial Drive  
 New Paris, IN 46553  
 574.831.5250  
[www.kmccontrols.com](http://www.kmccontrols.com)