

Description

The KMC REE-4006 relay module is designed primarily for time proportioning control of electrical hot water valves on VAV terminal units in HVAC systems.

The percent on-time of the electric hot water valve will vary in direct relation to the CTE series room thermostat signal. As the thermostat signal increases, the percent on-time of the water valve increases.

The REE-4006 must be used in conjunction with the VEP series 2-way and 3-way hot water valves. Up to three VEP valves may be powered from an individual REE-4006.

Features

- ◆ Time proportional control of hot water valves
- ◆ Valve on-time is directly proportional to room thermostat signal
- ◆ Simple installation

Application

The KMC REE-4006 Relay Module is intended for use with the following Controllers/Actuators:

- CEE-4000 Series
- CEP-4000 Series
- CSE-4000 Series
- CSP-4000 Series

The following thermostat models are recommended for use with this relay:

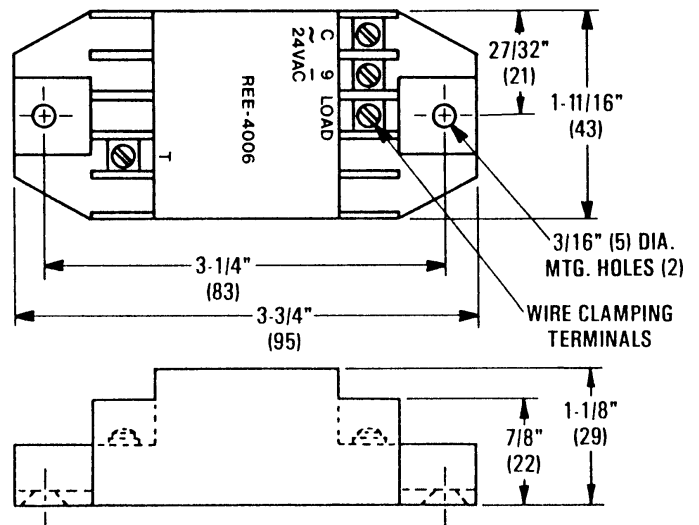
- CEE-1103
- CTE-1004
- CTE-1103

Specifications

Supply Voltage	24 VAC, +20%/-15% @ 1 VA
Input Signal	0-6 VDC
Output Capacity	10 VA max. @ 24 VAC
Associated Valves	VEP-12/22 2-way VEP-34/37 3-way



Connections	Plated screw terminals
Wire Size	14-22 AWG, stranded
Material	Beige ABS, UL Flame Class 94 HB
Weight	2 oz. (57 grams)
Temperature Limits	
Operating	40° to 120°F (4° to 49°C)
Shipping	-40° to 140°F (-40° to 60°C)



ALL DIMENSIONS ARE IN INCHES (MM)

KMC Controls, Inc.
 19476 Industrial Drive
 New Paris, IN 46553
 574.831.5250
www.kmcccontrols.com