

Description

The KMC REE-4002 relay module is designed primarily for use with VAV fan powered induction boxes. When used in conjunction with a direct acting CTE series room thermostat, the unit mounted fan and two stages of reheat can be controlled.

Each output circuit is capable of handling contactors of up to 10 VA @ 24 VAC. The "FAN" output circuit may be adjusted to start the unit fan at an air flow setting of 0 to 3,000 FPM. The two reheat circuits are factory set to sequentially actuate after the fan starts if the room temperature continues to fall.

Using the REE-4002 allows full adjustment of the unit fan starting point so that optimum use can be made of the warm air in the return air plenum before actuating reheat coils.

Features

- ◆ Controls fan and up to two stages of reheat when used with CTE series thermostats
- ◆ Control is activated sequentially after fan start
- ◆ Allows optimum use of warm air in the return air plenum
- ◆ Simple installation



Application

The KMC REE-4002 Relay Module is intended for use with the following Controllers/Actuators:

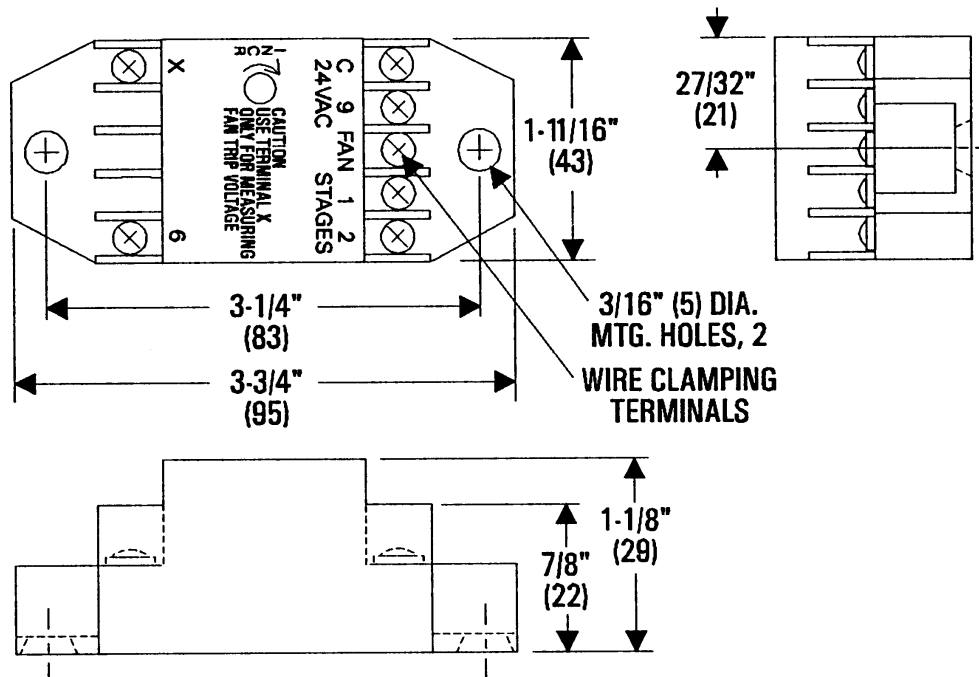
- CEE-4000 Series
- CEP-4000 Series
- CSE-4000 Series
- CSP-4000 Series

The following thermostat models are recommended for use with this relay:

- CEE-1101
- CEE-1103
- CEE-1105
- CEE-1108
- CTE-1101
- CTE-1103
- CTE-1105
- CTE-1108

Details

All dimension are in inches (mm)



Specifications

Supply Voltage	24 VAC, +20%/-15% @ 1 VA plus output loads
Input Signal	0 to 6 VDC
Output Capacity	10 VA per stage @ 24 VAC
Fan Setpoint	3 VDC, adjustable 2-6 VDC
Connections	Plated screw terminals
Wire Size	14-22 AWG, stranded
Material	Beige ABS, UL Flame Class 94 HB
Weight	2 oz. (57 grams)
Temperature Limits	
Operating	40° to 120°F (4° to 49°C)
Shipping	-40° to 140°F (-40° to 60°C)

KMC Controls, Inc.
19476 Industrial Drive
New Paris, IN 46553
574.831.5250
www.kmcccontrols.com