

### Description

KMC REE-4001 relay modules are designed primarily for use with VAV terminal units in HVAC systems. When used in conjunction with CTE series room thermostats, up to three stages of reheat may be controlled.

Each output circuit is capable of handling contactors of up to 10 VA @ 24 VAC. The three circuits are calibrated to actuate at equally spaced intervals across the thermostat's proportional band.

By using the REE-4001, the heating requirements of a particular VAV terminal may be actuated in three separate steps affording more precise temperature control.

### Features

- ◆ Controls up to three stages of reheat when used with CTE series thermostats
- ◆ Control is activated at equally spaced intervals across thermostat's proportional band
- ◆ Simple installation

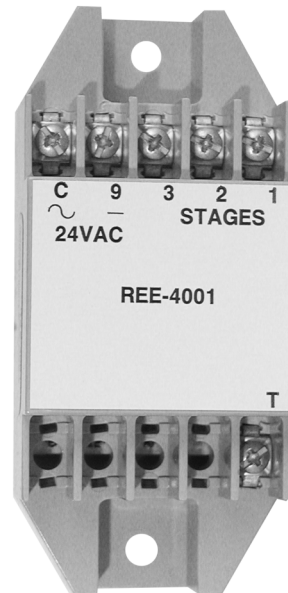
### Application

The KMC REE-4001 Relay Module is intended for use with the following thermostat models:

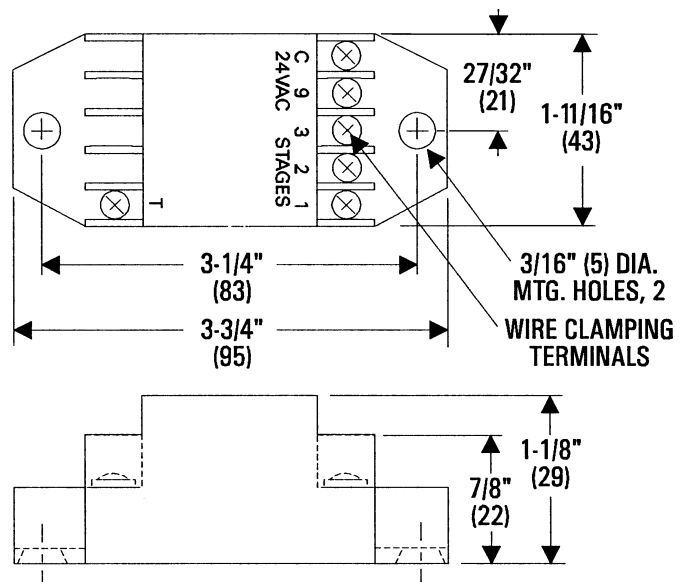
- CEE-1103
- CTE-1004
- CTE-1103

### Specifications

<b>Supply Voltage</b>	24 VAC, +20%/-15% @ 1 VA plus output loads
<b>Input Signal</b>	0 to 6 VDC
<b>Output Capacity</b>	10 VA per stage @ 24 VAC
<b>Connections</b>	Plated screw terminals
<b>Wire Size</b>	14-22 AWG, stranded
<b>Material</b>	Beige ABS, UL Flame Class 94 HB
<b>Weight</b>	2 oz. (57 grams)
<b>Temperature Limits</b>	
Operating	40° to 120° F (4° to 49° C)
Shipping	-40° to 140° F (-40° to 60° C)



All dimensions are in inches (mm)



**KMC Controls, Inc.**  
 19476 Industrial Drive  
 New Paris, IN 46553  
 574.831.5250  
[www.kmcccontrols.com](http://www.kmcccontrols.com)