

Description

The KMC REE-1004 Relay Module is designed for constant volume control of VAV terminal units in HVAC systems. Used in conjunction with specific CEP/CSP series of controller-actuators, it is capable of controlling a terminal at a constant setting, but has the ability to drive it fully open or closed with a contact closure. Since the desired air flow setting is made at the relay module, no room thermostat is required.

Features

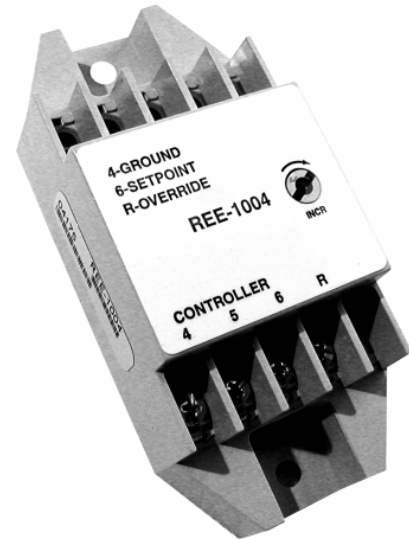
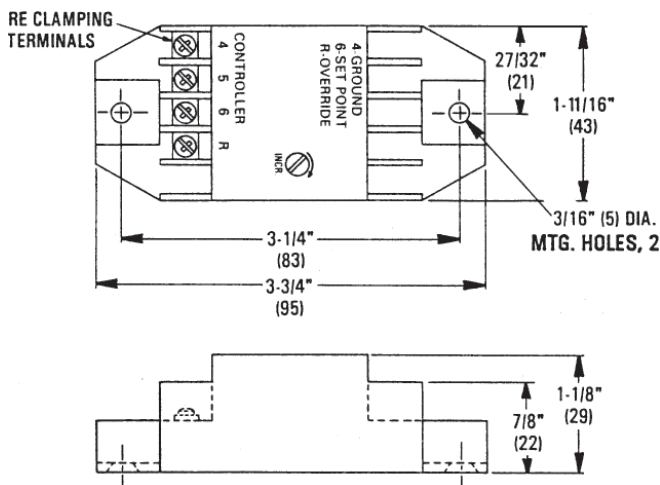
- ◆ Thermostat free flow control
- ◆ Simple installation

Application

KMC Relay Modules are intended for use with the following controller/actuators:

- CEE-4000 Series
- CEP-4000 Series
- CSE-4000 Series
- CSP-4000 Series

All dimensions are in inches (mm)



Specifications

Supply Voltage	9.1 to 18 VDC (2 mA)
Connections	Plated screw terminals
Wire Size	14 – 22 AWG, stranded
Material	ABS, UL Flame Class 94HB
Weight	2 oz. (57 grams)
Temperature Limits	
Operating	40° to 120°F (4° to 49°C)
Shipping	-40° to 140°F (-40° to 60°C)

KMC Controls, Inc.
 19476 Industrial Drive
 New Paris, IN 46553
 574.831.5250
www.kmccontrols.com